

Proudly Serving

IN FOUR
COUNTIES



People's
Self-Help
Housing

2022-23

Annual Impact Report

04

Home Ownership

06

Acquisition & Development

08

Construction

10

Property Management

12

Supportive Housing Program

14

Cover to Cover: Serving Four Counties

16

Camino Scholars

18

Community Collaboration

20

People of People's

22

Financial Partnerships

24

Your Impact

BOARD OF DIRECTORS

Chair | Shelly Higginbotham**Vice Chair** | Vito Gioiello

Yesenia Beas

Kevin Clerici

Hazel Davalos

Dieter Eckert, MD

Jose Flores

Paula Johnson

Sonia Kroth

Julissa Peña

Karol Schulkin, MSW

Nick Tompkins

EXECUTIVE TEAM

Chief Executive Officer & President

Ken Trigueiro

Chief Financial Officer

Griffin Moore

Chief Operating Officer

Anna Miller

Chief Real Estate**Development Officer**

Veronica Garcia

Chief Human Resources &**Administration Officer**

Nicole Ramos

EQUITY STATEMENT

PSHH is the longest-serving affordable housing provider on the Central Coast of California, and our organization has, in alignment with its mission, the responsibility to positively impact the lives of our residents and team members through advancing racial equity, diversity, and inclusion through our work, which currently include, but is not limited to:

- Learning from and growing with our communities and team members.
- Providing opportunities for learning and growth for our employees through inclusive opportunities at all levels of the organization.
- Building mindful communities that improve upon the issues of historic and systemic racism, income inequity, and discrimination.
- Developing policies and procedures that guard our residents and team members against unequal treatment, whether the treatment is intentional or unintentional.

LAND ACKNOWLEDGEMENT

We humbly acknowledge the indigenous people of the territories that our organization now occupies. Those indigenous groups include the Chumash, Salinan, Yokuts, Kitanemuk, and Tataviam people. We honor and respect the sacred connection between these people and the land that they have stewarded for generations.

At the properties for which we are now the temporary stewards, we pledge to stand against the inequities and injustices that Indigenous people have or might face. Our work commits us to advocate for justice and equity, ensuring we do our best to safeguard against future injustices.



A LETTER FROM PSHH Leadership

As you'll read in the pages ahead, we have taken our mission to a whole new level.

While we continue to be fully engaged in San Luis Obispo, Santa Barbara, and Ventura Counties, we are now also reaching individuals and families in a fourth, Monterey County. Our growth a clear indication of the increasing needs around us, a strategic response driven by a growing affordability gap created by market conditions.

Despite the significant progress made over the past year, the number of households added to our waitlists has grown to over 15,000. Homeownership has also become less attainable for many California residents. Of those aged 35-45, only 38% have the financial capacity to realize the American dream; for those aged 23-35 it is a bleak 15%.

Rising to this challenge, PSHH is setting a record for the construction of affordable rental apartments, and for building through the homeownership program. Supported by increasingly creative and deeper partnerships, our successes have been achieved through:

- closer relationships with housing authorities
- alliances with advocacy and service groups
- market-rate developers incorporating us into their projects
- philanthropic stakeholders investing in our social impact notes and providing much-needed program grants
- faith-based organizations reaching out to develop affordable housing on their properties
- local and state public agencies contributing underutilized land

All of these efforts together are easing the housing challenges of the Central Coast and with the assistance of critical stakeholders like you, we will remain engaged, informed, and open to new solutions.

We are so grateful for your multifaceted support and look forward to another year of accomplishments.



Shelly Higginbotham
Board Chair



Ken Trigueiro
CEO & President



BUILDING *Opportunity*

For over fifty years, we have brought stability and wealth-building opportunities to the Central Coast through our self-help program. Over 1,200 homes later, we are still unlocking potential and helping families achieve their dreams of homeownership.

MOVING UP & *Moving Forward*

The powerful nature of living in affordable rental housing is that only 30% of a resident's income is spent on shelter. This reduces the strain on a household budget for other essentials such as food, healthcare, and education.

PSHH housing is there for a resident as long as they need it, but for many that won't be forever. Last year, 11 PSHH households in Santa Maria used the springboard of living at our properties to stabilize their finances and accumulate enough savings for a downpayment on a home of their own.

This not only freed up units for others on the waiting list, but **propelled these families into the wealth building opportunities** that come through homeownership!



2,800+



individuals
on the
program
interest list



90%

of homes built in the last 25 years are
still owned by the owner-builder



Since 1970, nearly
\$13M
in low-interest
mortgages
underwritten
by PSHH



180+



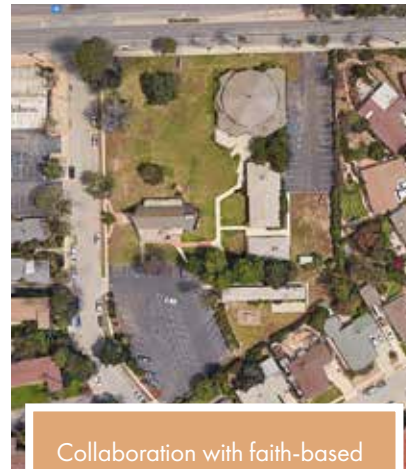
new homes in the PSHH
home ownership pipeline



BUILDING Solutions

Before we begin construction, our development team ensures site viability, guaranteed funding, and community buy-in. With 1,000+ new units of affordable housing in our pre-construction pipeline, there are many innovative, beautiful neighborhoods coming to communities throughout the Central Coast.

Learn more about some of our projects in various stages of development:



Collaboration with faith-based organizations are opening up new opportunities. In Ventura, a **College Ministry Center** will include both a housing and a day care component, while in Santa Maria, partnership with a religious community will bring affordable housing to a three acre site.

Coming to the area through the power of partnership, **Cleaver Commons** will bring 53 units to a popular coastal community. Consisting of two parcels, the project is a joint venture between the City of Grover Beach, the Housing Authority of San Luis Obispo, and People's Self-Help Housing.

A successful 9% tax credit application is being joined by HOME and Permanent Local Housing Allocation funding with the project also receiving awards through the State Multifamily Housing Program of \$8M, and a \$2.7M Joe Serna Jr farmworker housing grant.

350+
new units
pending financing



FINANCING

Assembling what's known as the 'capital stack', the layered cake of financing needed for each real estate deal, requires expert strategy, coordinated timing, and collaboration from many project stakeholders.



Located in the Santa Ynez Valley with easy access to Highway 101, **Buellton Gardens** will play host to 89 units of family and farmworker housing. Financed through a 4% tax credit allocation, a Joe Serna Jr. grant award and \$19M through the State Multifamily Housing Program, Buellton Garden Apartments will be built in two phases.

The California Department of Housing and Community Development's **Super NOFA** (Notice of Funding Availability) is intended to advance the State's goal of creating 2.5 million homes by 2030. PSHH submitted 7 Super NOFA applications, totaling more than \$90M for new housing throughout the Central Coast.

ACQUISITION & PLANNING

Acquiring developable land is increasingly difficult, especially in one of the most expensive real estate markets in the US. However careful planning in these early phases provides a strategic foundation for new affordable housing.



Project Homekey is a groundbreaking statewide initiative that repurposes vacant motels into affordable housing options. Following our successful collaboration on a similar project in Paso Robles, we are now pursuing new Project Homekey funding opportunities in San Luis Obispo County.

An increasing trend, master developments are incorporating affordable housing components into their plans. A new partnership of this type is evolving in **Carpinteria**, where 41 units will be built alongside a hotel and commercial use suites.



Nearly
400

new units in the
acquisition and
planning phase

SECURING ENTITLEMENTS

This is one of the most important parts of the development phase. Zoning, density requirements, design and final use all need to receive local jurisdiction approval before building can begin.



Nearly
250
new units
securing
entitlements

Hard work is paying off in Fillmore where 50 new units have been approved. Now awaiting a successful funding decision from the California Department of Housing and Community Development, **Fillmore Terrace** will bring much-needed affordable housing to families and farmworkers.





Bringing the architect's designs to life, our construction team collaborates with talented groups of subcontractors to ensure quality control, site safety, budget accuracy, and efficient scheduling.

At no cost to the customer, **California's Low-Income Weatherization Program** provides households with solar photovoltaic systems and energy efficiency upgrades.

Benefitting residents at three sites in the Santa Maria Valley, this first phase included improvements to individual units: preventing drafts, stopping leaks, and upgrading heating. Installation of solar photovoltaic systems are bringing reduced energy bills - a win for our residents and a win for the environment!



Through **Cabins for Change** in Grover Beach, pallet shelters combine temporary housing solutions with 24/7 case management. With the added benefit of keeping families housed together, storage for personal possessions, and even room for pets, this innovative space provides security and comfort for those experiencing homelessness.

Continuing our long running partnership with 5Cities Homeless Coalition, our construction team was proud to assist with the development of this valuable community resource.

382
new units under construction
throughout the Central Coast

Each construction project is different and two new developments coming to San Luis Obispo will bring innovative, trauma-informed design for units serving local veterans and individuals with healthcare needs. Paired with tailored wrap-around services, once these units at **Broad Street Place** and **Tiburon Place** are complete, we look forward to welcoming 100+ new residents home!



The City of Santa Paula plays host to our very first new rental construction in Ventura County. Due to the continued escalation of building expenses, at \$68M, **People's Place** has the highest construction costs in our development history.



Acres of abandoned greenhouses have given way to the development of 90 new units of housing for farmworkers in South Oxnard. The groundbreaking for **Cypress Place** was attended by Secretary Lourdes Castro Ramirez (photographed center) from the State of California Consumer Services & Housing Agency. Also joining the event were family members of the late Ventura County Supervisor, Carmen Ramirez. In recognition of her longtime affordable housing advocacy, the site's community center will be named in her honor.





BUILDING Community

The Property Management team works diligently to maintain and care for all of our 55 rental properties. Flexible and responsive, our onsite teams ensure residents feel at home from the moment they move in!

NOW
Open!

Beautiful weather accompanied the occasion of our first in-person grand opening in over two years! The celebration of **Templeton Place II**, a 36-unit property in rural San Luis Obispo County serving seniors and veterans, was attended by over 100 community partners, team members, and residents, who proudly showcased their new homes.



On average, PSHH residents make



less than the area median income for the Central Coast.



of PSHH households include children under the age of 18.

15%



of PSHH residents are 60+ years old.

Keeping properties safe, maintained, and looking pristine for our residents is a top priority. This year, many PSHH sites benefitted from **major site renovations**:

- El Patio Hotel in Ventura received new flooring (pictured below)
- Atascadero Gardens installed new, insulated windows
- Pacific View Apartments in Morro Bay completed major exterior building repairs
- Ladera Street Apartments in Santa Barbara finished a two-year overhaul of their stairways



24%

year-over-year increase in number of wait list applications



44%

of applicants are seeking a 2-bedroom units, which comprise 35% of PSHH's total units



62%

of applications are for SLO County properties, 49% of the PSHH portfolio

The housing crisis in California is one of the deepest in the country. This has a notable impact on communities such as the Central Coast where demand far exceeds the inventory of both affordable and market-rate housing. With over 1,000 new units in our construction pipeline and partnerships with numerous local housing agencies and municipalities, we are deeply committed to addressing this challenge and meeting the needs that are presented through our waiting list.



BUILDING Resilience

From the day a resident moves into a PSHH neighborhood, or if a life event prompts it, we are ready to provide support. Our Supportive Housing Program plays a key role in the return to stability and security.



Formed to promote well-being, cognitive stimulation, and social interaction for seniors and individuals living with disabilities, once a month members of the **Travelers Club** meet to build connection through art.

Many beautiful projects have also been created by artists of all ages, through the expertise and guidance of **Bellas Artes**, a Carpinteria-based arts organization. As well as providing expert creative classes, this community group also hosts free music, dance, and cultural performances for residents and neighbors alike to enjoy!



The breadth of support offered to our residents could not be achieved without the collaboration of numerous equally passionate community partners. Our Supportive Housing Program is grateful to work with more than **50** organizations to provide free, onsite, resident-centered services, such as:

- Flu & Vaccine Clinics
- Meal Delivery
- Career Guidance
- Advance Directive Assistance
- Conflict Resolution
- Local Transportation
- Recreational Activities

..and many more!



Nearly
\$600,000
in direct financial assistance
coordinated to residents for
critical needs

Thank you for everything you do. Your love and care for the elderly community are evident in all that you do for them. The happiness that you bring the people you work with is invaluable. My wholehearted thanks to you for bringing joy and laughter into my mom's life.

- Note from a family member of a PSHH resident in Santa Barbara



Homelessness prevention
services kept

217

PSHH residents
safely housed

RESIDENT Success Stories



Using a \$500 grant from the PSHH **Build Her Fund**, Lupita was able to attend and graduate from small business training. Now the proud owner of a candy and party supply store, the new entrepreneur showed tenacity and creativity to achieve her dream!



After years of instability, and hardship, last holiday season found a single mother and her daughter in stable housing through PSHH.

Thanks to the safe roof over their heads and the Supportive Housing Program's many community connections, a housing voucher was secured, debts were cleared, and at last **stability was found.**



When a mobility device broke down, and an insurance request for repairs was denied, one resident was left confined and confused. An intervention by their social worker and advocacy navigating the medical system, resulted in access to a brand-new power wheelchair and a **return to independence!**



In our name, the 'self-help housing' movement can be traced back to the 1930's. Low-income families, especially farmworkers, were unable to access conventional mortgages, so in 1961, the USDA began to provide financing in rural areas.

Now well-established, our Home Ownership program sees households assisting each other with the construction of their homes, working together to create a new community. Last year, the joyful opportunity to put front door keys into the hands of ten more families took place in Greenfield, near King City.

Look at page 4 to learn more about how access to homeownership creates **Opportunities** to change lives.



Opportunities

MONTEREY COUNTY

Proudly Serving

IN FOUR COUNTIES

Communities

SAN LUIS OBISPO COUNTY

Through Camino Scholars, we welcome K-8 students at our learning centers, open up a world of academic possibility through College Club, and provide personalized guidance through programs like CELEBRE.

Our educational services are accessible to students in many different ways - in-person in the classroom, online, through partnerships such as LoyalTeach, and via professional community mentorships. Each method bring students one step closer in the successful attainment of their academic goals!

Read page 16 to learn more about how investments in students strengthens **Communities**.



With a mission to build affordable homes with site-based services that offer opportunities to change lives and strengthen communities, People's Self-Help Housing has served California's Central Coast for over 50 years.

Since our founding in San Luis Obispo in 1970, we have certainly changed as an organization both in scope and scale. In recognition of the expanded service area of People's Self-Help Housing, this year's Impact Report highlights our work from Monterey, San Luis Obispo, Santa Barbara and Ventura counties.

Services

SANTA BARBARA COUNTY

Beginning with the restoration of the vintage Victoria Hotel in Santa Barbara, and now throughout the Central Coast, for over 20 years our Supportive Housing Program, has ensured that thousands have been able to live well and independently.

Our compassionate site-based staff - social workers, property managers, and maintenance teams - all work together to ensure that our residents can live with wellness.

See how these site-based **Services** help support neighborhoods on page 12.



Homes

VENTURA COUNTY

With over 1,000 units of new homes in our development pipeline, the majority of these are coming online in Ventura County. This year, we purchased land in Ojai, secured entitlements in Fillmore, and broke ground in Oxnard.

With construction almost complete at People's Place, we look forward in the coming months to welcoming even more into the PSHH family in Santa Paula.

Learn more about affordable **Homes** coming to Ventura County and beyond, on page 6!

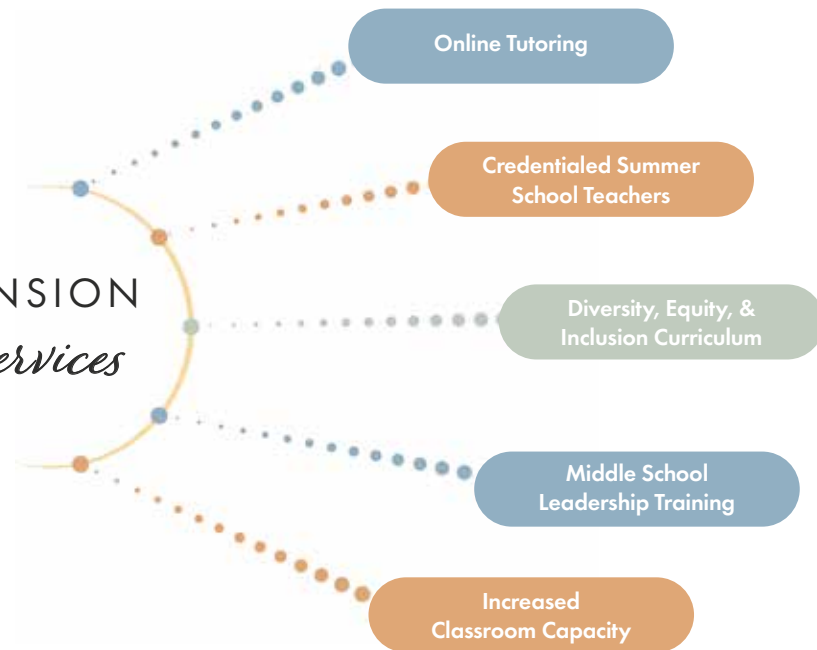




BUILDING *Futures*

Camino Scholars serves over 400 students per year with innovative K-8 math and literacy programs and provides guidance and resources to those pursuing higher education. Onsite at nine Learning Centers, this nationally-recognized program provides students and their families with access to free, immersive, year-round academic assistance.

EXPANSION *of Services*



Extracurricular enrichment and field trips offer real-world, hands-on experiences to complement classroom learning. We are grateful to partner with more than **40** diverse community organizations to facilitate these meaningful experiences, including:

Morro Bay State Park
Cuesta Community College
Santa Barbara Zoo
Santa Cruz Channel Islands
Santa Maria Discovery Museum
Infinite Music Foundation
Cal Poly San Luis Obispo
Santa Barbara Metropolitan Theaters
Wilderness Youth Project

..and many more!

Innovative new funding from the California Arts Council has brought **mixed-media art lessons** to all Camino Scholars classrooms!

This new curriculum, taught by a professional local artist, works to increase student's confidence, creativity, and understanding. It helps show how art can translate into a vast number of career possibilities such as illustration, graphic design, architectural design, and many others!



THE RESULTS

are in...

Testing at the end of the 2022-23 academic school year showed significant improvements for Camino Scholars students across the board! Of the **400+** students participating:



- Number of students performing above their grade level **doubled**
- **23% of students** performing below their grade level **improved**
- Number of students performing at their grade level **increased by 4%**

Overall, there was a **66% improvement in student performance** across all categories, a testament to the collective efforts and commitment to academic excellence of PSHH educator and students!



20:1

average student to teacher ratio at a Camino Scholars Learning Center



58

College Club students currently pursuing undergraduate degrees



Kaleb Robles

Lucia Ramirez-Solano

Our CELEBRE program supports Latinas on their higher education journey. This year, the program had its highest enrollment since 2019 with many students being first in their family to pursue higher education.

A highlight of the year included a **statewide tour of college campuses**, included trips to three universities, a school conference, an exclusive tour of Chicano Park from a local muralist, and the opportunity to hear a panel of professional women speak about their journey through college and careers.





Through the sharing of our physical assets, our services, and generous volunteerism of our team members, it is an honor to partner with an array of entities throughout our footprint. As a **Community Development Organization**, we are part of the fabric of the Central Coast.



Hosted **100+** community events for nonprofits and local businesses in PSHH event spaces.

Every three years, our organization receives a top to bottom third-party review from NeighborWorks America, a congressionally-chartered community development organization. This consists of pre-assessment reports, a week-long in-person appraisal of every function, of every team, and a follow up deep-dive analysis of performance.

NeighborWorks, once again, recognized PSHH's passion and professionalism with the highest ranking: Exemplary. This opens up our organization to **new opportunities, partnerships, and funding sources** to better serve the Central Coast.



Community input is an essential piece of the PSHH development model. An example of this engagement in action occurred when PSHH and architecture firm RRM Design met at Fillmore Terrace with Ventura County youth advocacy group '**One Step a La Vez**'. The meeting provided not only a platform for their feedback, but also an opportunity to teach students about housing development.

THE BLUEPRINT
TOOLS FOR INFORMED ADVOCACY

This year, housing was a winning issue in the legislature and the ballot box. The momentum continues with the growth of subscribers to our new advocacy newsletter: **The Blueprint**.

Learn more:



This year, PSHH team members participated in a number of prestigious community programs, which brought new strategies, deeper connections and more integrated service throughout the Central Coast:



Marketing and Occupancy Manager, **Olivia Bernal** (pictured far-left), completed the 'Leadership Santa Maria Valley' program

Chief Operating Officer, **Anna Miller**, has been studying with Harvard University in a 16-month executive leadership program, facilitated through NeighborWork America.



Multifamily Housing Development Project Coordinator, **Diana Feldtkeller**, was accepted into the prestigious 'Howard & Irene Levine Affordable Housing Development Program' at UCLA.

Director of Resource Development, **Joanna Domínguez** (front row, second from left), connected with regional leaders during her time participating in the 'Leading from Within' program.



A new partnership, provided through funding from CenCal Health, has allowed our Supportive Housing Program to provide enhanced services. This brings new, **Medi-Cal supported, comprehensive care management** from PSHH social workers, who coordinates client healthcare and expanded funding opportunities to support the expansion of this vital program.

We're proud to provide reliable, secure IT services to **5** nonprofit partners:

*House Farm Workers!
Housing Land Trust Ventura County
Housing Trust Fund Ventura County
SLO County Housing Trust Fund
Transitions-Mental Health Association*

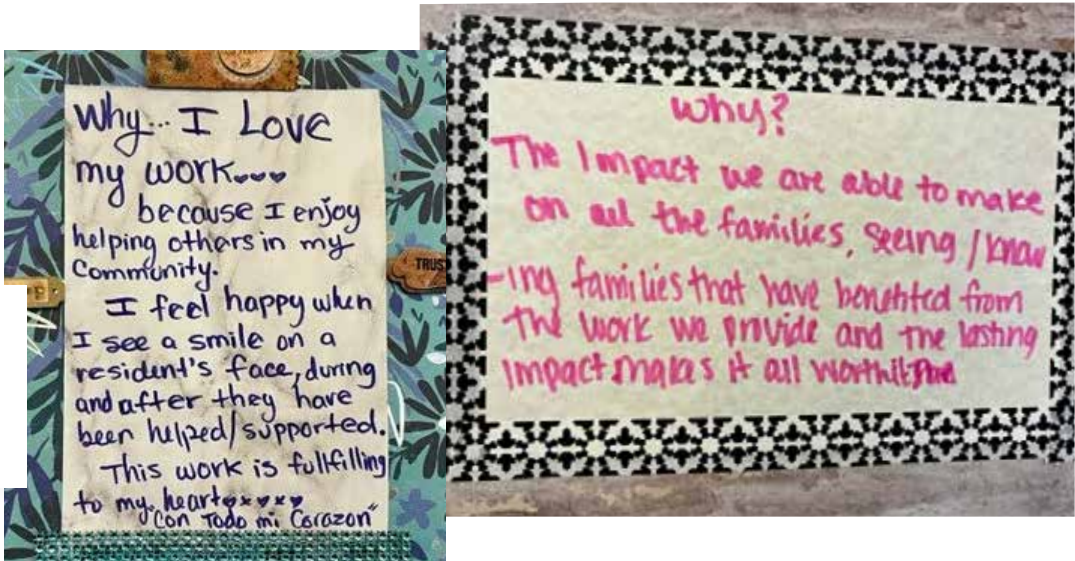




Spread throughout the Central Coast are 220+ passionate team members, from diverse backgrounds, working hard to bring more supportive, affordable housing to your community.

THE 'WHY' Behind the Work

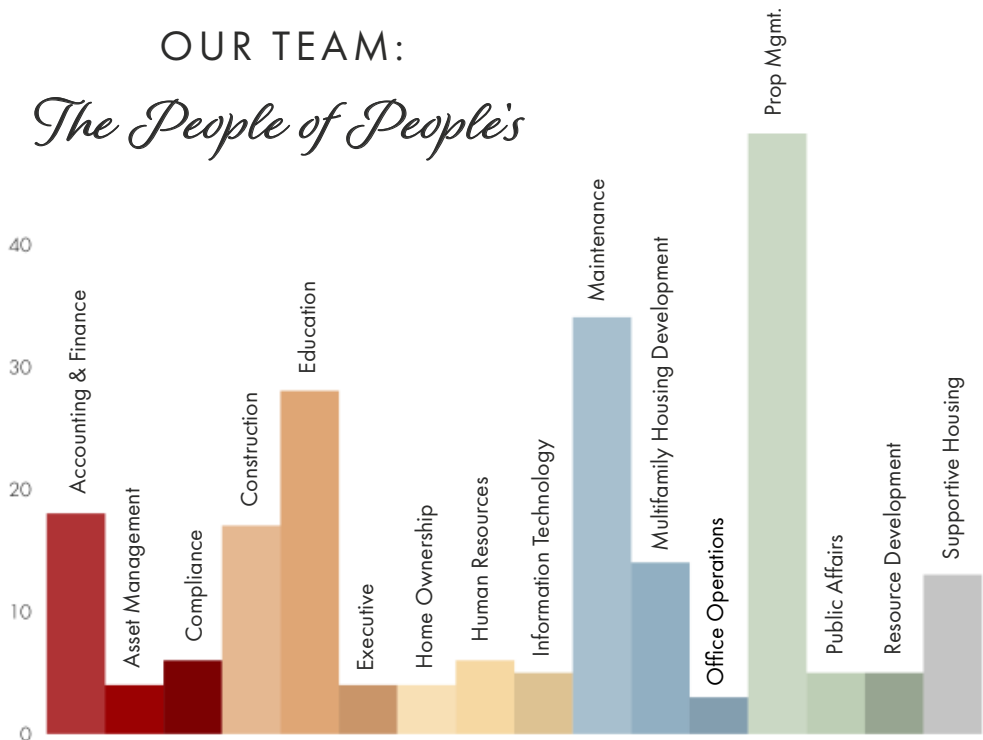
So much more than just a job, for many team members of PSHH it's a mission, a passion, a way to give back to their community.



Congratulations to our 2023 Employee Award Winners, pictured with CEO & President Ken Trigueiro:
 President's Award Winner: Aracely Barajas, AMFT, Bilingual Social Worker (pictured left)
 Employee of the Year: Bianca Guillen, Human Resources Manager (pictured right)

Chosen by their peers, the Employee of the Year goes to someone who demonstrates a deep commitment to the PSHH mission and the communities that we serve. The President's Award goes to a team member who consistently goes above and beyond the call of duty and is selected by the CEO.

OUR TEAM: The People of People's



10%
 growth in organization's headcount to better serve the PSHH mission



11%
 of team members promoted in the past year

AMPLIFYING Diversity, Equity & Inclusion

Three years after its inception, the PSHH IDEA (Inclusion, Diversity, Equity & Action) Commission moved from the theoretical into the concrete!

Commission members took the results from an organization-wide survey and developed a **3-year action plan** to provide professional development opportunities and address disparities in the areas of diversity and equity. The team has already accomplished a number of goals in response to the assessment:

- Revised the Employee Manual, including additional religious holiday accommodations, inclusive clothing guidelines, and removal of gendered language.
- Implemented bias reduction strategies for interview and hiring processes
- Facilitated team member focus groups to gain broader insights of the employee experience
- Implemented staff-wide, professionally-led racial equity workshops



80%
 participation in organization-wide equity assessment



This year, **Dr. Yanitsa Buendia de Llaca** joined the PSHH team as the **Diversity, Equity & Inclusion (DEI) Advisor**. With a PhD in Religious Studies and experience as a qualitative researcher, Yanitsa also brings depth and value to the role through her expert knowledge in the fields of indigenous revitalization, ethnography, and history.
 This newly-formed position not only represents a financial investment in equity initiatives, but also provides a full-time focus on DEI improvements to help ensure PSHH is a successfully diverse and inclusive organization.



The careful and responsible management of our financial resources is of the utmost importance to our organization. Assets are well-protected and expertly-used in the fulfillment of our mission.



259

community donors
invested in the
PSHH mission



28%
of PSHH team members
give back through our Staff
Giving program

The Builder Games not only raises much-needed revenue for the Supportive Housing and Camino Scholars programs, but through the fun and games illustrate in a lighthearted way the challenges of the building process itself.

2023 Builder Games Champion was returning team **Empire Electrical Solutions**. Notable guests included a visit from U.S. Congressman Salud Carbajal and participation in the build from a former PSHH resident!!



STATEMENT OF *Financial Position & Financial Activities*

Cash & Cash Equivalents	\$23,652,822	Accounts Payable & Accrued Liabilities	\$6,767,424
Accounts, Grants & Contracts Receivable	\$9,969,063	Security Deposits	\$736,595
Notes Receivable	\$28,657,955	Deferred Revenues	\$1,779,622
Endowment Fund	\$191,404	Notes Payable	\$117,652,963
Affordable Housing Project Interests	\$6,779,395	Other Liabilities	\$4,369,855
Prepaid Expenses	\$437,964	Total Liabilities:	\$131,306,459
Development Projects in Progress	\$48,422,214	Net Assets without Donor Restrictions	\$82,771,870
Property & Equipment, Net of Depreciation	\$96,582,236	Net Assets with Donor Restrictions	\$614,724
Total Assets:	\$214,693,053	Total Net Assets:	\$83,386,594

Total Liabilities & Net Assets: \$214,693,053

Net Assets June 30, 2022: \$82,585,741 | Net Assets June 30, 2023: \$83,386,594

Program Expenses 85%

Housing Development & Net of Capitalized Costs	\$3,916,690
Rental Operations & Property Management Costs	\$11,958,243
Social Services & Educational Programs	\$2,395,640
Depreciation Expense	\$4,272,678

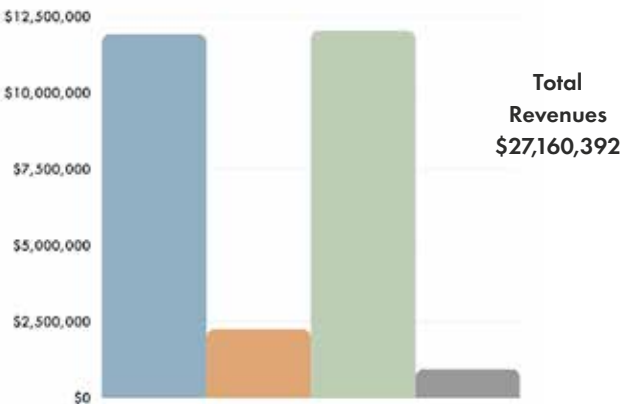
Support Services Expenses

Management & General 13%	\$3,367,441
Fund Development 2%	\$513,991



Revenues, Gains & Other Support

Affordable Housing Rental Income & Rent Subsidies	\$11,928,260
Government, Grants & Contributions	\$2,252,094
Construction Management & Fees	\$12,039,864
Interest, Dividends & Sale of Land	\$940,174





To all our supporters who have made the achievements of this past year possible: our gratitude and deep appreciation. Each gift has played a significant and important role in moving our mission forward. They have been listed in the order received, and reflect donations of \$100 or more, given from July 1, 2022 through October 18, 2023.

Alan & Carol Koch	Stan & Elaine Rosenfield
Paula Johnson	Harold Cota
Karol Schulkin	Michael & Jennifer Payne
Anonymous	Val Bennett
Todd Broussard	Mike & Paula Huston
Deborah Parks	Mark Renahan
Cole Cheatwood	Linda Stafford Burrows
Mike & Betsy Couch	Jose & Magdalena Flores
Andrea Devitt	Susan & Kelly Stater
Tammy Faecher	Lillianna Anderson
Shelly & Robert Higginbotham	Darlene Ball
Lawrence & Susan Del Mese	Debbie Brunsting
Sharon Turner	Vicki Cheatwood
Elise Carraway	Hazel Davalos & Guillermo Chavez
Liz Wilkes	Matthew Haas
Marcella Gelman	Griffin Moore
Marylou & Thorv Hesselund	Mike Zepeda
Vito & Veda Gioiello	Jim Healy & Leslie Mosson
Emalyn Kealm	Stephen Herald
Jean Holmes	Mike & Paula Huston
Deborah & Tom Sherry	Gary & Vallerie Steenson
Richard & Kate Riggins	Sandy Himmelrich
Anonymous	Garret Olson
Christine & Richard Greek	Mary Renard

Nancy Collinge
Janet Huston
Gonzalez Family
Dr. Fima & Jere Lifschitz
Lee & Tony Adinolfi
Marya Barr
Loreta Auerbach
Gillian Cole-Andrews
Joanna Domínguez
Sheryl Flores
Rick Gulino
Cynthia Magliari
Catherine Manning
Terry Mersai
Gabrielle Miller
Jazmine Oliva
Michael Pearlman
Tito Ponce
Nicole Ramos
James Shammas
Anonymous
Liz Smith
James Summer
Christi Ware

Nick & Kathy Tompkins
Anna Miller
Marc & Kimberly Sargen
Pam Boies
Chuck & Nina Ebner
Janice & Rex Wolf
Denise Fourie & Michael Multari
Joseph & Madeleine Johnson
Colleen & Jerold Best
Margaret Connell
Kathleen Copeland
Ray & Dianne Gateley
Lynda Snodgrass
Martha Aitchison Siegel
Chuck & Lois Crotser
Robert Zdenek
Marilyn Jenkins
Anonymous
Sybil Rosen
Neil Fisher
James Ream
Catherine Nelson
Bob Garrett
James Kyriaco
Pam Maines
Ann Linnett Pless
Ken & Nancy Knight
Christine Theodoropoulos
Dalene Eimon
Joe & Jill Sabol
Ruben & Freida Salvador
Jack & Felicia Cashin
Christiane Schlumberger
Thomas Keylon

John & Christine Parker-Kennedy
Janet McGinnis
Margaret & James Schaefer
Christina Bird-Holenda & Eric Holenda
Adele Rosen
Kevin & Marilee Statom
Mark Devencenzi
Dene & Emily Hurlbert
Jean Scott
Dieter & Gail Eckert
David Shammas
David Brown
Francine Woods
Peggy Kay Perhac
Robert & Sally Burns
Gary & Gayle Robinson
John & Julie Schutz
Jack & Judy Stapelmann
Devin Fairbanks
Sean Leonard
Peggy Mandeville
Kathryn Renahan & Jack O'Brien
Isabel Trujillo
Douglas & Margaret Allard
Lois Capps
Dr. Christopher Payne & Jeannette Potts
J. Myron Hood
Judy & DK Philbin
Betsy Watson
Anonymous
Roberta Jacobs
Richard & Patricia Angel
Deborah Pearlman
Vincent Carattini
Jerry & Paula Crawford
Anonymous

Mike Gray
Jason Ashley
Kenyon & Kim Banks
Alejandra & Gerry Mahoney
David Marchall
Marietta Miller
Austin Petty
Suzanne Winslow
Linda Rosso
Dan Mosunich
Traci Bradbury
Lenny Grant
Curtis Ridling
Michael D. Armstrong
William & Carole Marks
Elizabeth Espinosa-Rodriguez
Carl & Teresa Macdonald
Gene Hershberger
Stuart Atkins
Anonymous
Omead Poure
Anonymous
Lisett Ramirez
Rigo Rodriguez
Anonymous
Joseph Mangiardi II
Teresa Stucky
Anonymous
Luz Verlengia
Andy Pease & Frank Basich
Mary Griscom
Sarah Vaccaro
Dianna Blodgett
Evan Gross

Thank You!

We are so grateful for the generous support of all our supporters! If we inaccurately recognized or omitted your name, please email giving@pshhc.org.

NEIGHBOR'S CIRCLE

The Neighbor's Circle recognizes those making recurring or monthly gifts. This sustained commitment ensures much-needed support for our programs.

- Michael Payne
- Evan Gross
- Carolyn Chafee
- Thomas Martin
- Jessica Griffiths
- Sharon Turner
- ...and the many PSHH Team Members who give generously through Staff Giving

TRIBUTE GIFTS

These gifts recognize friends, mark life’s milestones, or memorialize a loved one. Thank you to those who have chosen to support us in such a meaningful way.

- In Memory of Jonna O'loughlin
Traci Bradbury
- In Honor of Jane Renahan & Mike Pearlman
Deborah Parks
Joseph Renahan
Kathryn Renahan & Jack O'Brien
- In Memory of Gordon & Virginia Stater
Susan & Kelly Stater

LEGACY CIRCLE

The Legacy Circle recognizes Planned Gifts, which have a profound, lasting impact on the lives of generations of PSHH residents.

- Anonymous
- Anonymous
- Jeanette Duncan
- Gene Hershberger
- Dene & Emily Hurlbert
- Adele Rosen
- Annette Schlosser
- Sharon Turner

COMMUNITY Partnerships



IN-KIND Gifts

Support of our programs comes in many forms. Thank you to all the following who have generously donated in-kind gifts or services.

- A French Touch Salon
- Adventure Challenge
- Ancient Peaks Winery
- Anna Miller
- Art Central
- Avenales Ranch
- Avila Beach Paddlesports
- Avila Lighthouse Suites
- Baileyana, Tangent & True Myth
- Battle Axe
- Blacklake Golf Resort
- Bloom Again
- Boone Graphics
- Buffalo Wild Wings
- Cal Poly Arts
- Cal Poly Athletics
- Cambria Beach Lodge
- CAPSLO HEAP
- Carpinteria School District
- Catholic Charities
- Chido Bar
- CommUnify
- Community Foundation SLO
- Comstock Wines
- Covell Ranch
- Cynthia Renahan
- Dana Simonsen
- Doc Burnstein's Ice Cream Lab
- Elizabeth Espinosa Rodriguez
- Essence Beauty Supply & Boutique
- Evergreen Barbershop
- Family Care Network
- Finney's Crafthouse
- Food 4 Less
- Gillian Cole-Andrews
- Granada Theatre
- Great American Insurance Company
- Green Movers
- HIK
- Home Depot
- Home Instead
- HumanKind Fair Trade

- Island Packers
- J. Lohr Vineyards & Wines
- Jane Renahan
- Janet Huston
- Jewish Family Center
- Juliane Starks
- Kat Andrews
- Kristina Evanko
- Los Osos Cares
- Lure Fish House
- Madeline's Restaurant
- Madonna Inn
- Mama Ganache Artisan Chocolates
- Miner's Ace Hardware
- Moonstone Cellars
- North County Neighbor Aid
- Novo Restaurant
- Open Air Flowers
- Pacific West Bank
- Park Cinemas
- Paso Robles Children's Museum
- Paula and Charlie Johnson
- PCPA Pacific Conservatory Theatre
- Quilting Angels
- Ragtag Wine Co
- Rick Gulino
- Robin Teunissen
- Santa Barbara Foundation
- Sensorio
- Sheila Kearns Chocolates
- SLO Brewing Co.
- SLO Chamber of Commerce
- SLO Children's Museum
- SLO Food Bank
- SLO Symphony
- SLOCOG
- Smog Value
- St. Vincent de Paul
- Talley Vineyards
- TBRA
- The Crushed Grape
- Tolosa Winery
- Torchell Mind and Body
- Toys For Tots
- Trader Joes
- United Way
- Vina Robles Vineyards & Winery
- Von's
- Woods Humane Society
- YMCA
- Youth Springs Art



Robert & Adele Stern Foundation | Towbes Toundation | Herbert & Gertrude Latkin Charitable Foundation
J.H. Douglas & Associates | Mid-Coast Fire Protection | G. A. Fowler Family Foundation | Central Drywall Inc.
5 Cities Newcomers Club - Act II | Anita L. Stafford Charitable Lead Trust | Henry W. Bull Foundation
Hildegard Charit Tua-Main Balin | La Centra Sumerlin Foundation

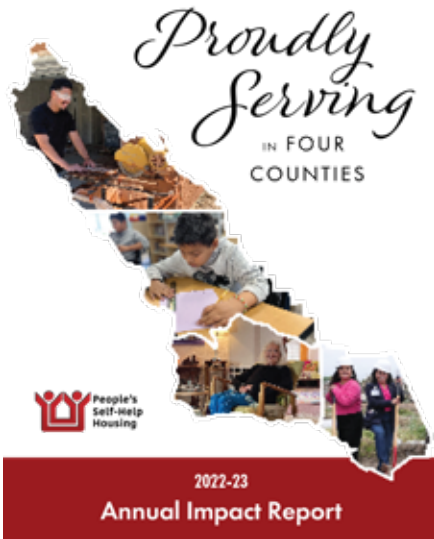


1060 Kendall Road
San Luis Obispo, CA 93401

RETURN SERVICE REQUESTED

Cover to Cover

In recognition of the expanded service area of People's Self-Help Housing, this year's Impact Report shares our work from Monterey, San Luis Obispo, Santa Barbara and Ventura Counties.



We Build
affordable *homes* with site-based *services*
that offer *opportunities* to change lives
and strengthen *communities*
on the Central Coast of California

Learn more at pshhc.org

Together, we can build so much more than housing. Make your generous gift today!

Online pshhc.org/give

Mail 1060 Kendall Road
San Luis Obispo, CA 93401

Phone (805) 548-2357

Email giving@pshhc.org



Federal Tax ID #95-2750154

